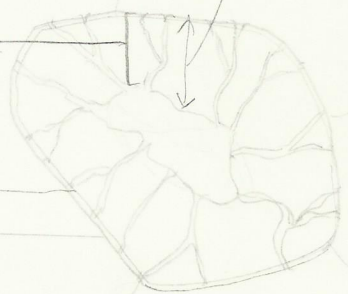
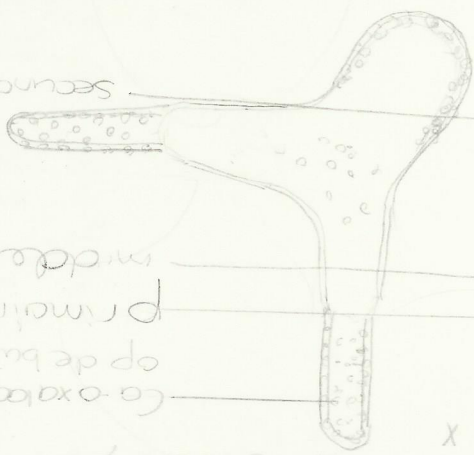


sec. celwand

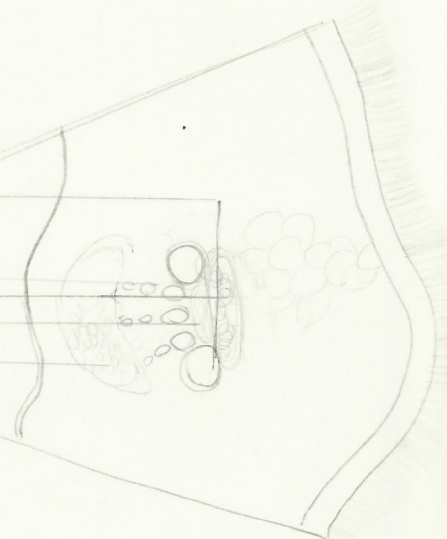


Plantae  
Pyrus (pae)  
detail: broekhyascleyde  
axide  
400x



Plantae  
Nymphaea (nuc)  
detail: asterol scleride  
x

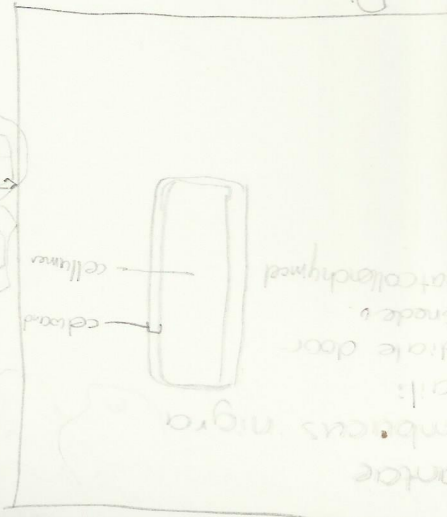
secundaire celwand  
midden leger  
primaire celwand  
op de buitside  
Ca-oxaal kristallen



Plantae  
Cucurbita  
detail: dwarsdoorsnede van de stengel  
400x

intern floem  
vasculair cambium  
extern floem  
primaire xylem  
groot vat van  
primaire xylem

resoblaauw ?



Plantae  
Bambusa nigra  
detail:  
radiale door  
snede  
plaatcollenchym  
cellwand  
celluum

morg

radiale celwand  
geboorthyascleyde protuberant  
celwand (congetale)  
celluum on

porenclym